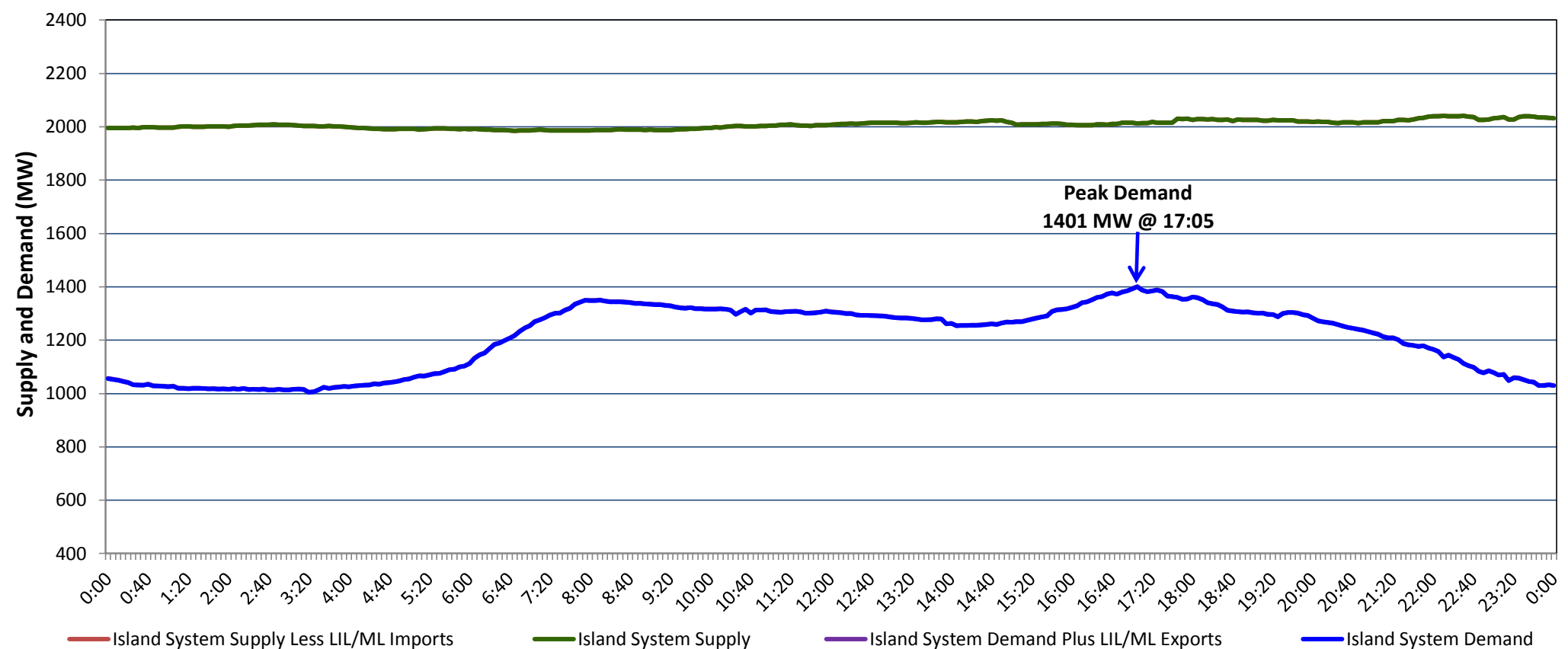


Newfoundland Labrador Hydro (NLH) Supply and Demand Status Report Filed Thursday, January 09, 2020

Section 1 Island Interconnected System Supply, Demand & Exports Actual 24 Hour System Performance For Wednesday, January 08, 2020



Supply Notes For January 08, 2020

1,2

A As of 1719 hours, December 14, 2019, Stephenville Gas Turbine available at 25 MW (50 MW).

Section 2 Island Interconnected Supply and Demand

Thu, Jan 09, 2020	Island System Outlook ³	Seven-Day Forecast	Temperature (°C)		Island System Daily Peak Demand (MW)	
			Morning	Evening	Forecast	Adjusted ⁷
Available Island System Supply: ⁵	1,975 MW	Thursday, January 09, 2020	-1	-5	1,525	1,419
NLH Island Generation: ⁴	1,670 MW	Friday, January 10, 2020	-12	-8	1,615	1,508
NLH Island Power Purchases: ⁶	105 MW	Saturday, January 11, 2020	0	-1	1,370	1,266
Other Island Generation:	200 MW	Sunday, January 12, 2020	-8	-8	1,535	1,429
ML/LIL Imports:	- MW	Monday, January 13, 2020	-7	-6	1,495	1,390
Current St. John's Temperature & Windchill:	0 °C -9 °C	Tuesday, January 14, 2020	-10	-9	1,510	1,405
7-Day Island Peak Demand Forecast:	1,630 MW	Wednesday, January 15, 2020	-12	-12	1,630	1,523

Supply Notes For January 09, 2020

3

- Notes:
1. Generation outages for running and corrective maintenance are included. These are not unusual for power system operations. They generally do not impact customer supply. The power system operators schedule outages to system equipment whenever possible to coincide with periods when customer demands are low and sufficient supply reserves are available. However, from time to time equipment outages are necessary and reserves may be impacted.
 2. Due to the Island system having no synchronous connections to the larger North American grid, when there is a sudden loss of large generating units there may be a requirement for some customer's load to be interrupted for short periods to bring generation output equal to customer demand. This automatic action of power system protection, referred to as under frequency load shedding (UFLS), is necessary to ensure the integrity and reliability of system equipment. Under frequency events have typically occurred 5 to 8 times per year on the Island Interconnected System and the resultant customer load interruptions are generally less than 30 minutes. With the activation of the Maritime Link frequency controller during the winter of 2018, UFLS events have occurred less frequently.
 3. As of 0800 Hours.
 4. Gross output including station service at Holyrood (24.5 MW) and improved NLH hydraulic output due to water levels (35 MW).
 5. Gross output from all Island sources (including Note 4).
 6. NLH Island Power Purchases include: CBPP Co-Gen, Nalcor Exploits, Rattle Brook, Star Lake, Wind Generation and capacity assistance (when applicable).
 7. Adjusted for curtailable load, market activities and the impact of voltage reduction when applicable.

Section 3 Island Peak Demand Information Previous Day Actual Peak and Current Day Forecast Peak

Wed, Jan 08, 2020	Actual Island Peak Demand ⁸	17:05	1,401 MW
Thu, Jan 09, 2020	Forecast Island Peak Demand		1,525 MW

Notes: 8. Island Demand / LIL / ML Exports (where applicable) is supplied by NLH generation and purchases, plus generation owned and operated by Newfoundland Power and Corner Brook Pulp & Paper (Deer Lake Power, DLP).